

Namibia, Africa

April 1-12, 2026



You may be asking yourself why you should choose Namibia as a safari destination in Africa over other locations. There are many reasons that make this iconic land the best travel decision you can make, so read on for more exciting details...



©gmm

Nature's Tapestry Photo Adventure Tours

Namibia April 1-12, 2026

Namibia is the soul of the African continent. It is a country of many contrasts and surprises. Located in Southwest Africa the country is bordered by the Atlantic Ocean on the western side, Botswana on the east and South Africa on the south side. Vast open landscapes and beautiful blue skies are the landmarks of this expansive land along with towering mountains and large areas of desert where stunning canyons and gigantic sand dunes at Soussusvlei are found along the western coast. But the most important reason to choose Namibia for your Safari tour are the incredible number of wild animal parks, both private and National, that contain large quantities of wild animals, birds and reptiles.

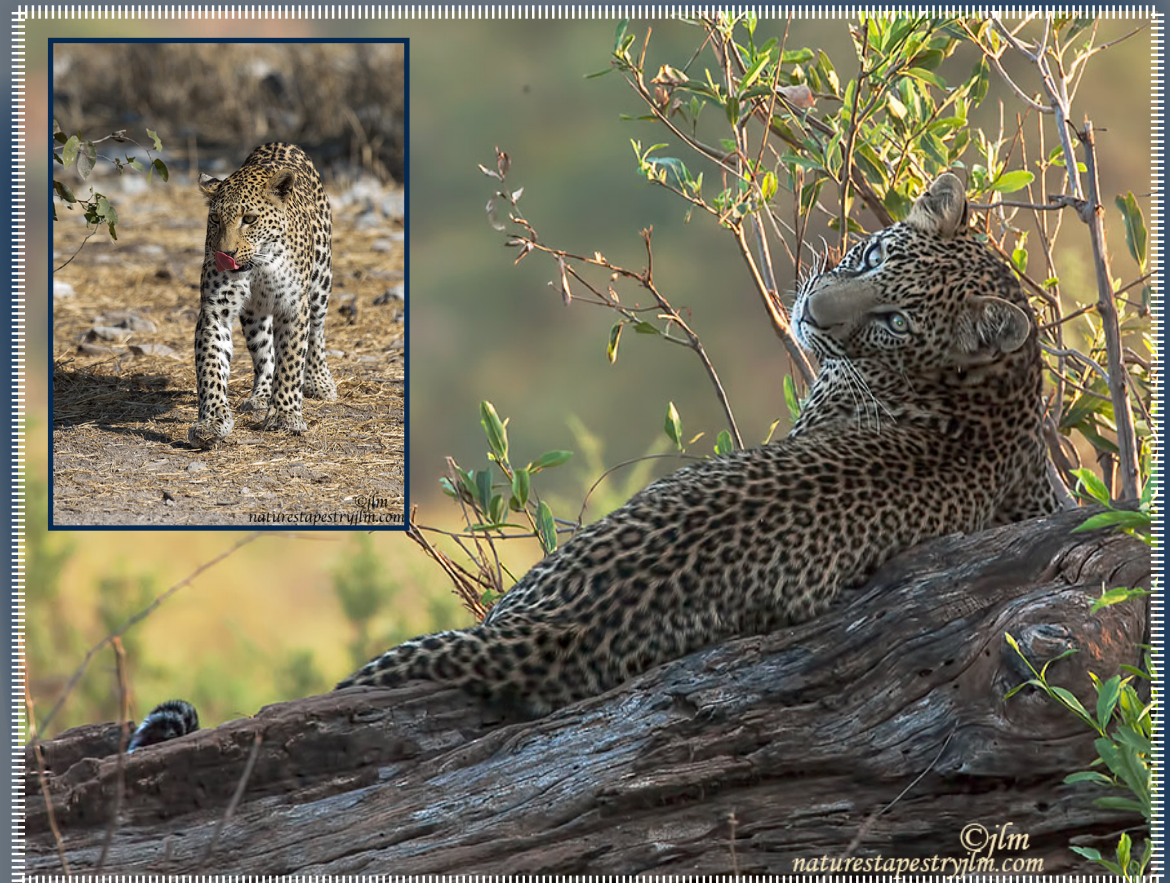
While Namibia is a huge land mass it only has 2.5 million habitants, making it one of the least populated countries in the world. However, it is multicultural with remnants of colonization seen as three languages are spoken: English, German and Afrikaans. People are friendly and helpful to tourists. Safety is key and it is considered very safe to travel anywhere in the country.

For wildlife enthusiasts, the most treasured aspect of Namibia is the incredible amount of wildlife that is found in the country. Animal and bird species abound making for a perfect safari.

Nature's Tapestry Photography Adventure Tours has been taking photographers and interested guests to this unspoiled land of Namibia for 15 years. Our 2026 Tour will concentrate on visiting one of the largest animal preserves in Africa: Etosha National Park. The largest Cheetah and Black Rhino population is found here as well as growing herds of the tallest elephants in all of Africa. A special bonus

is the huge quantity of birds that are present in Etosha, from very small warblers to huge, numerous raptors. In addition, two additional large private game parks are included to visit with long game drives scheduled to see additional wild animal species in unique settings with unforgettable scenic views.

As a safari destination, Namibia is often



overlooked in favor of more familiar regions in Africa. It is still under the radar for many travelers, but because of its commanding strengths and variety of travel options, it is becoming more popular with seasoned travelers and now chosen for many as one of the premier locations to see and photograph wildlife in their natural habitat.

Airline travel to and from Namibia has many great alternatives to evaluate. Currently, there are no direct flights to Namibia from the USA. Most international airlines fly to Johannesburg, South Africa and then a short flight on to Windhoek, Namibia on a regional carrier. Other options include flying to Europe and then on to Southern Africa, either Namibia or Johannesburg.

On arrival in Windhoek and once cleared through immigration and customs, you will be met by a driver from the rental car agency who will transport you and your baggage to the rental depot located on the highway into the city of Windhoek. Here, you will sign paperwork and give the agency a printout of your credit card. This will be returned to you when you return the vehicle. A complete explanation will be given on how to operate the truck by one of the rental employees. One important aspect is that driving is on the left-hand side of the road in Namibia. It will only take a few miles of driving to acclimate you to the difference, but it should be easy.

Driving in Namibia on the main highways is on paved roads. Off highway roads and in National Parks are gravel and generally in good condition. We will stay in a group of four cars while driving between the main tour stops. Walkie talkies are also available to use for conversations between guests in the vehicles while driving. The lead vehicle will always be driven by the tour leaders.

TOUR LEADERS

Gary and Judy Malloch have designed the 2026 Namibia Safari Tour with emphasis on obtaining the best guest experiences for photo opportunity interactions with the animals. These opportunities may include locations at the waterholes, forest area, or open plains and are based on their in-depth knowledge of the parks that will be visited.

Other locations where Judy and Gary have conducted tours include Costa Rica, Ecuador, The Pantanal in Brazil, India, and other African locations.

Both Gary and Judy are prepared to assist guests at any time and are available for photo consultation or guidance.





ITINERARY

April 1 - Day One

Arrival in Windhoek, the capital city of Namibia. The vehicle rental company will pick up guests and take them to the rental station halfway into the city of Windhoek. Once rental agreements and vehicle orientation has been complete guests will depart for the hotel in Windhoek.

Once check in has been completed guests will be free to do some shopping in the plaza close by for trip items (water, snacks, rice for bean bags, etc.)

Dinner will be with the group at the hotel or a famous local restaurant.

Bed and Breakfast.

April 2 - Day Two

After breakfast and check out, we will pack up the trucks and depart for our first safari segment. Departing the city, the group will be heading north for one of the oldest private game parks in the country. The journey will be approximately 225km or two and one-half hours. On arrival, we will check in and settle in our rooms. Time will be spent getting familiar with the lodge grounds. The vibrant bird life is testimony to the beautiful gardens at the lodge. There is a large lake facing the lodge where hippos swim freely with all kinds of waterfowl. In midafternoon the group will gather and get seated in a large safari truck to do a two-to-three-hour drive on the expansive property.

This park spans 60,000 acres of diverse terrain sustaining nearly 6,000 animals, including large herds of Kudu, Springbok and Gemsbok or Oryx. Rare species such as Black Rhinos, Sable Antelope and Mountain Zebras traverse the rugged hills, while Elephants and Hippos gather around waterholes. Cheetahs are also present at this refuge.

Nature's Tapestry Photo Adventure Tours

Return after the safari drive back to the lodge and prepare for a wonderful dinner.

Bed, Dinner, and Breakfast.

April 3 - Day Three

Early morning breakfast and then load up for a second safari drive. We will plan to arrive back at the lodge just prior to noon. Pack up and check out.

You might want to check out the wonderful gift shop that exists at this lodge prior to departure. They have items that you will not find elsewhere. The drive to the next lodge will take approximately four and one-half hours.

Our next destination is an outstanding camp in the Onguma Nature Reserve, situated on the eastern side of Etosha National Park. This reserve has more than 34,000 hectares of protected land and species consisting of plains game including kudu, giraffe, eland, oryx, hartebeest, zebra, impala plus many more that roam freely. Predators such as lion, cheetah and leopard are common residents of the park as well. Over 300 different bird species are found here.

Our group will be spending three nights at this spectacular camp. It is conveniently situated at the Eastern entrance gate to Etosha National Park. The main feature of this lodge is its waterhole which is next to the main restaurant. Animals come to drink day and night at this waterhole. Our group will have a welcome din-

ner and then overnight in comfortable chalets. Bed, Dinner and Breakfast.

April 4 - Day Four

Another early morning breakfast we will pack up our photo gear and depart in our 4 truck convey to Etosha. Here we will have to fill





out forms for passenger and truck usage fees. All guests will require passports to fill out the park entrance forms. Forms will be collected, and payment made by the Tour Leader at the Namutoni Camp Office located about 20 minutes inside the park entrance gate.

Etosha is the largest animal park in Namibia and contains numerous natural and man-made waterholes where animals congregate to drink water. Sometimes the waterholes are vacant of animals but most of the time animals are there coming and going for water.

On past occasions, we have seen wonderful animal encounters in this area: Rhinos charging into the waterhole scattering the rest of the animals present, spotted hyaena in huge groups fighting over scraps left over from a kill the night before, Cheetah on the open plains hunting in the early morning and huge raptors scanning the plains for food. Amazing!!!

Etosha is also famous for its many game drives through forests and wide open plains, We will definitely be out on these drives!

Late afternoon back to Onguma for dinner and observation at the waterhole. Bed, Dinner and Breakfast.

April 5 - Day Five

After breakfast we will head out for our second day in the eastern part of Etosha visiting some of the favorite waterholes we saw yesterday but also exploring new parts to the park area. At dusk we will head back to the camp for dinner and more excitement at the camp waterhole checking out the new water-level hide that is receiving rave reviews.

Bed, Dinner and Breakfast.

April 6 - Day Six

Today we depart Onguma after breakfast and make our way to camp Halali. During the drive we will stop at waterholes and spots that are often great viewing locations between camp

Namutoni and Halali. During our drive between the camp lodges we will travel through vast open plains scattered with semi-aires savannah grasslands dotted with watering holes. We will pass by the 5000 sq kilometer Etosha Salt Pan that takes up a large area that can be seen from space. It looks like a huge lake of white water seen from the road. On this drive we will see abundant wildlife such as lions, elephants, black rhinos, jackals, spotted hyena, warthogs and giraffes and beautiful black faced antelopes found only in this area of the park. Often we will see Secretary Birds walking through the tall grass and Huge Kori Bustard birds that prefer walking to flying.

Halali is situated halfway between Namutoni (the far eastern camp in the park) and Okaukuejo (the most famous resort in Etosha) located inland from Anderson Gate, midway entrance to Etosha. Halali is also noted for its famous flood-lit waterhole which is viewed from an elevated vantage point that provides exceptional wildlife viewing day or night. Often Leopards and Rhinos are seen at this waterhole in the twilight hours.
Dinner, Bed, and Breakfast.

April 7 - Day Seven

Early rise, breakfast and out checking more of our favorite waterholes in the Halali region. This area of Etosha offers not only some of the best water-

holes to photograph at but also some of the many trails to spend quality time looking for birds. The Lilac Breasted Roller, various species of Hornbills as well as some of the iconic raptors such as the Bateleur Eagle, African Fish Eagle, Tawny Eagle, the majestic Martial Eagle and the five species of Vultures are frequently seen in this area of the park. Back to camp for rest or another night at the elevated waterhole.
Bed, Dinner and Breakfast.



April 8 - Day Eight

This morning after breakfast and check out, we will head for the premier resort in Etosha National Park. But on the way to Okaukuejo we will visit a lot of very good locations to view animals. Okaukuejo is located within the southern region of this wild paradise and approximately a one- and one-half hour drive from Halali. On the drive to Okaukuejo we will again hit all of the main waterholes on the main road. We often see elephants and herds of zebra and Oryx on this drive.

Some facts regarding Okaukuejo:

- it has a waterhole rated the best in Africa

Nature's Tapestry Photo Adventure Tours

- the waterhole is lit at night and accessible 24 hours a day
- we will be staying in chalets around the waterhole, so we have access 24 hour a day.

Game wardens are always on patrol in the park. Guests may not get out of their vehicles when travelling out of the resort area at any time. It is not only dangerous but also strictly enforced. Any guest found out of their vehicle could be expelled from the park.

All resorts in Etosha are enclosed and protected from animals entering the property. Once inside the resort gate you may walk freely within the resort perimeter. Guests may not leave any park in Etosha until sunup when the main gates open. All guests must be in the resort prior to sundown when the gates are closed. This is a hard and fast rule that must be adhered to: no exceptions! The Okaukuejo area offers abundant wildlife opportunities to see at the waterholes and on the extensive plains that exist in the area. We have favorite waterholes at each resort area but our favorite of all exists to the west of Okaukuejo. It is a long drive but the variation in terrain and types of animals is outstanding. This trip is a day long journey, but if we are fortunate to experience when the animals are moving in or out it is unbelievable. Back to the resort and time to relax prior to dinner. Bed, Dinner and Breakfast.

April 9 - Day Nine

Up early. Breakfast and in the trucks waiting for the gates to open. Out on tour we will encounter many different locations to visit. Travelling south we will see open areas and various waterholes that tend to be man-made.

Nevertheless, the animals still need water and will come to get nourished. Often we may visit the same waterhole a couple of times in the same day if the action has been very good. Both trails and open area

Namibia April 1-12, 2026

are excellent places to encounter Cheetah sightings. Guests are free to spend as much time at the Okaukuejo waterhole as they wish as animals are constantly coming and leaving this remarkable location.

Bed, Dinner and Breakfast.

April 10 - Day Ten

This is our final day at Okaukuejo and we will make it memorable. After breakfast we will head out towards a special place that is known for frequent lion sightings. The Salt Lake Pan can be seen clearly from the road



Nature's Tapestry Photo Adventure Tours

Namibia April 1-12, 2026

at this location. In addition, the parking lot located at this waterhole provides for an excellent viewing of lions in the early morning light. If the lions are present, it will be a wonderful finish for us to remember Okaukuejo.

Mid-morning, we will head back to camp, check out and begin our trip back to Windhoek. We will make one stop on our way back to Namibia's Capital. The city is called Outjo and is about one hour south of Okaukuejo. It is a great stop because it has a wonderful bakery to have a lunch break as well as browse several very good curio or souvenir shops to pick up any gifts or things that will remind you of your safari to Namibia.

On arrival in Windhoek and check in at the hotel you can begin to get your personal belongings ready for your trip home tomorrow. You should also arrange with the hotel staff to have your truck washed and ready to deliver it back to the rental shop.

Dinner at the hotel. Bed and breakfast.

April 11 - Day Eleven

Departure day and the end of your Namibia Safari. Depending on your airline departure time, you will have to leave the hotel and return your vehicle to the rental company. You should allow one hour and one half for the return inspection of the truck. Once completed, the rental company will transport you and your luggage



back to the airport where you can check in for your flight home.

April 12 - Day Twelve

Arrival home after a long overnight flight from Africa. We hope you have memories stored up of this "trip of a lifetime" that you will remember with great joy!



TOUR COST

- The cost for the twelve-day Safari tour to Namibia is **US\$6,535 per person.**
- This rate is based on sharing a double room. Single supplement is available at an additional cost.
- **Initial deposit of US\$3,535** is due when you make a commitment to join the Safari tour. **Final tour balance of US\$3,000 will be due February 1, 2026.**
- Please note that we are limiting the guest list to six persons plus the two tour guides.
- Nature's Tapestry Photo Adventure Safari Tour to Namibia is truly a trip of a lifetime to personally see and experience wildlife in the raw!

WHAT THE TOUR COST INCLUDES

- Accommodations are in first class hotels, lodges or park resorts.
- All breakfast and dinners included. Lunch is often excluded as we will be out on Safari all day, most days. Lunches can be packed.
- Ground transportation is in Toyota Hilux, double cab new trucks. Each vehicle is for two people only. One photographer driving with the passenger seat free to assemble camera gear and one photographer in the back seat with ample space to assemble camera gear as well. The trucks are equipped with automatic transmission, A/C, radio, GPS, extra tires, power steering, emergency travel kit, large back bed covered with locks, double petrol tanks and diesel fuel. Tires are like new with great tread. The trucks are covered with insurance as well. These vehicles are ideal for Safari travel in Namibia.
- All park entrance fees
- All diesel fuel.
- Two-way walkie-talkie units will be provided for each vehicle. They have limited range, but we will be travelling together and we have found them extremely useful to point out things of interest and communicate with the tour leaders.

WHAT THE TOUR COST DOES NOT INCLUDE

- International airfare from your home departure to Windhoek, Namibia and return.
- Personal items such as laundry service, internet charges or WIFI charges.
- Passport fees, visa expense or airport fees (if any).
- Service gratuities. Any gratuity is at your discretion and not required.
- Trip cancellation, medical and emergency evacuation insurance. It is highly recommended that each guest secures this type of protection prior to departure. Medicare will not cover any expense out of the USA. If you have private insurance, you should check to see if you are covered while travelling outside the US.
- Any medications your doctor recommends you get prior to travelling to Africa.
- All alcoholic beverages and purified water for personal use.
- Snack or food items for personal consumption.



OTHER GUEST INFORMATION

1. All guests are required to read and sign a Disclaimer and Assumption of Risk document that all guest participants taking a Nature's Tapestry Photo Tour are required to sign. These forms will be sent to you.
2. It is highly recommended to research and purchase trip cancellation and medical insurance coverage for your trip. If you research online travel insurance companies, you will see that many offer coverage. Most policies also include other things like trip cancellation, emergency evacuation, trip delays, baggage loss etc. Make sure you review the "claim" and overall customer service experience people have had when dealing with the company.
3. Ensure your passport is up to date with at least six months validity prior to expiration. Also, you will need to have TWO blank VISA pages in your passport. Do not confuse blank "ENDORSEMENT or DECLARATION" pages at the back of your passport for visa pages as they are completely different things.
4. Check with your medical practitioner that you are up to date on shots for travel to Africa. Malaria medication is recommended and should be the daily pill dosage not the weekly pill dosage.
5. Proof of covid shots is not required for entry into Namibia nor back into the USA. However, it is always a good

idea to carry proof of vaccination with you.

6. A general list of things to bring on your trip such as clothes, over the counter meds, photo gear, etc. will be sent out 60-90 days prior to the trip. These items include things we have found very useful to take on Safari to Africa.

7. The electric current in Namibia is 220V. You will need to take adaptor plugs for use there. You can only use adaptor plugs on peripheral equipment that is dual voltage i.e. camera gear, chargers, computers, etc. Some hair dryers are dual voltage and can be changed by a switch on the handle of the dryer. Adaptor plugs that are special for Namibia can be purchased on Amazon. Warning: if you plug in a 110V appliance to 220v plug you will probably fry it. Be careful and check the voltage of your appliance.

8. Souvenir shopping can be done at different lodges and at the departure section of the airport in Windhoek.

9. Namibian currency is not freely accepted anywhere outside of the country so if your travel to Namibia includes side trips to other countries, insure you use up all the Namibian dollars or convert them to South African Rand. SA Rand is freely convertible in Namibia at par.



IF YOU ARE INTERESTED IN COMING TO AFRICA WITH US PLEASE LET US KNOW AS SOON AS POSSIBLE, SO WE CAN PLAN YOUR TRIP WITH US MAKING SURE YOU WILL MAXIMISE YOUR SAFARI ADVENTURE AND MAKE IT AS GREAT AS POSSIBLE!!

CONTACT INFORMATION

Nature's Tapestry JLM, LLC

Judy Lynn and Gary Malloch

Email : gnmalloch@gmail.com

Mobile Phone : 561 756-0341

WhatsApp : +1 561 756-0341

**NATURE'S TAPESTRY JLM, LLC, DBA:
NATURE'S TAPESTRY PHOTO ADVENTURE TOURS,
IS REGISTERED WITH THE STATE OF FLORIDA
AS A SELLER OF TRAVEL,
REGISTRATION NO. ST39587**

ALL PHOTOS ARE PROTECTED BY US COPYRIGHT LAWS AND MAY NOT BE USED FOR PERSONAL, COMMERCIAL OR EDUCATIONAL PURPOSES WITHOUT CONTACTING US TO OBTAIN WRITTEN PERMISSION. ACKNOWLEDGING THE SOURCE OF THE COPYRIGHTED PHOTO DOES NOT SUBSTITUTE FOR OBTAINING PERMISSION.

